

**DIVISION 10 - SPECIALTIES**

Includes the following sections:

[10 11 00 Visual Display Surfaces](#)

[10 14 00 Signage](#)

[10 21 13 Toilet Compartments](#)

[10 28 13 Toilet Accessories](#)

[10 44 16 Fire Extinguishers](#)

**VISUAL DISPLAY SURFACES****10 11 00**

Chalkboards and Markerboards: Porcelain-on-steel writing surface.  
Tackboards: Natural cork.

**SIGNAGE****10 14 00**

The UCSC Campus has a Building Sign Program. A copy of these guidelines may be obtained online or from the University's Representative. The guidelines:

1. Provide graphic standards for a campus sign program.
2. Provide category classification for all sign types in the program.
3. Assist in identifying which sign type is appropriate to use.
4. Assist in the application and placement of signs.

In interior locations where signs are to be installed using double-sided adhesive tape, the tape shall be applied at the top & bottom as it makes removal easier.

**REGULATORY SIGNAGE**

Regulatory signs shall comply with all applicable codes in the current California Manual on Uniform Traffic Control Devices (MUTCD). In addition, the signs shall have High Intensity Prismatic Sheeting (HIP) applied.

Plans showing proposed regulatory signage shall be reviewed with the University Representative for approval before installation.

**TOILET COMPARTMENTS****10 21 13****GENERAL**

- A. Solid plastic or phenolic core / melamine surface toilet compartments (as well as shower enclosures) are preferred on the UCSC campus in areas of high moisture or humidity such as housing applications due to ease of maintenance and durability. Verify all locations with the University Representative.

- B. Where privacy is a concern, such as co-ed residence halls, use full length support brackets and door strikes, such that clearances where components join (door to pilaster, pilaster or panel to wall, pilaster to panel, etc.) does not exceed 1/4-inch. Taller doors, extending from 6" above finish floor to 6'-6" above finish floor, should be considered for such situations. The use of such panels at divider panels, however, can create lighting problems.
- C. Provide extra hardware components for storage and future use by maintenance staff. Amount: 2% or one stall. Confirm with the University Representative.

#### MATERIALS

- A. High density polyethylene solid plastic toilet compartments, minimum 1" thick doors and panels, as manufactured by Santana Products, Inc., Comtec Industries, Capitol Partitions, or equal.
  - 1. Santana Products Company / Poly-Mar HD with Plasti- Glaze 280 finish.
  - 2. Capitol Partitions, Inc. / Poly-Pro, or equal.
- B. Solid Phenolic core / melamine surface toilet compartments, as manufactured by Bobrick Washroom Equipment, Inc., Capitol Partitions, Sanymetal Partitions, or equal.
- C. Doors and panels: Manufacturer's standard solid polymer resin system with surface resistant to pens, pencils, standard markers and paints; cleanable with household detergents; color integral through panels. Doors minimum 24" wide, except where otherwise required for access by persons with disabilities.
  - 1. Color: As selected from manufacturer's standard colors.
  - 2. Flame Spread Rating: Maximum 50 flame spread and 450 smoke developed, Class II or Class B, ASTM E84 Tunnel Test. Class II or better flame spread rating. Meet or exceed California Building Code requirements for "Approved Plastic Materials".
    - i. Moisture-resistant
    - ii. Shall meet ASTM D6578 for non-ghosting, graffiti-resistant surface
    - iii. Shall meet ASTM D2197-13 for scratch resistance
    - iv. Shall meet ASTM D2794-93 for impact resistance
    - v. Shall not contain urea-formaldehyde resins
- D. Recycled content shall be a minimum of 20%
- E. Hardware: All hardware shall be vandal-resistant, heavy duty stainless steel (SS) and shall be secured by factory installed inserts. Hardware shall not be secured directly into the core.
  - 1. Hinges: 16-gauge, self-closing, continuous piano hinge
  - 2. Door stop plates: provide two 11-gauge stainless steel stops with rubber bumpers
- F. Material warranty: 25 years

|                           |                 |
|---------------------------|-----------------|
| <b>TOILET ACCESSORIES</b> | <b>10 28 13</b> |
|---------------------------|-----------------|

For dispensing accessories, **the University has negotiated a contract with a supplier.** For general restroom facilities, accessories will be furnished by the University consisting of the following:

- 1. Liquid soap dispensers: Gojo model ADX12
- 2. Paper towel dispensers: Tork model #55 10 282
- 3. Toilet paper dispensers: Tork model # 55 56 28

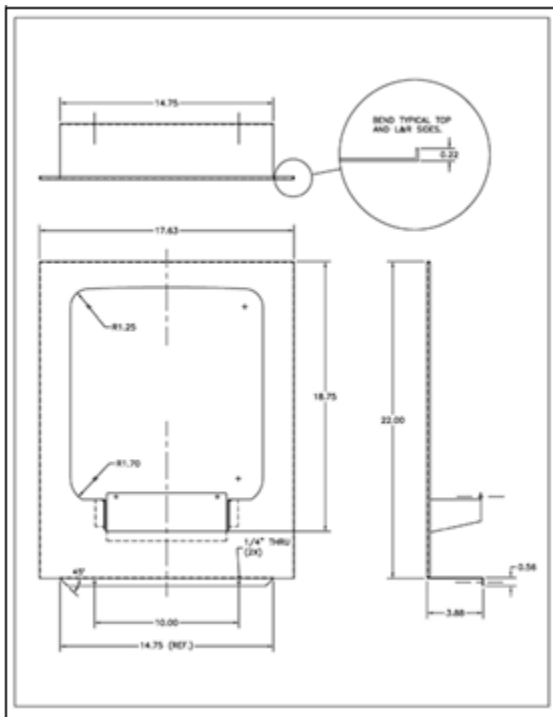
4. Filler panel for recessed waste receptacle (see below). The below Tork Intuition filler panel works only with the following recessed manufacturer models: ASI 0469, ASI 20469 (Curved front), Bobrick B3944, Bobrick B43944 (Curved Front), Bradley 234 and Gamco TW1.
5. Waste receptacles for ADA compliant applications include Bradley 344, Bobrick 43644, or equal.

Accessories listed above updated in Summer 2022. Confirm current make and model with University Representative.

For accessories provided by the University, the design professional shall coordinate installation requirements in the design, including backing, supports, and all required clearances. For prominent or notable facilities, consult the University’s Representative for direction.


Mirrors: Mirrors shall be 1/4" thick with solid backing. Frames shall be 1/2-inch by 1/2-inch by 1/2-inch heavy duty stainless steel angle, with all corners mitered and welded, Bobrick Series B-165, or equal, sizes as indicated. Tilt mirrors shall be stainless steel with tilt built into frame, Bobrick Model B-293, or equal, sizes as indicated.

Where possible, one soap and paper towel dispenser shall be provided for every two lavatories.



Elevation Washroom Accessory Service and Parts Manual  
 Tork Elevation Matic Filler Panel 3096020  
 for 5510202 & 5510282 dispensers

**TORK**  
 Revision Date: 11-19-13



**Tork Elevation Matic Filler Panel 3096020**  
 For use with Tork Elevation Matic dispenser:  
 5510202 & 5510282

**Panel Specifications:**  
 SS recessed panel for Elevation Matic.  
 Case pack - 1 part per case  
 Net Wt. - 3.15 lbs  
 Gross Wt. - 4.32 lbs  
 Case size - 23-3/4 x 18-1/4 x 4-1/2  
 Case code - 1 00 73286 62498 4

**Application:**  
 Fits recessed combination towel/waste dispenser where  
 towel dispenser has separate upper half door.


**Works with most manufacturers:**  
 ASI models: 0469 & 20469 (Curved door/waste bin)  
 Bobrick models: B3944 & B43944 (Curved door/waste  
 bin) Bradley model: 234 & Gamco model: TW1

**Fits dispensers:**


- 17-1/8" to 17-7/16" wide (outside flange)
- 3-13/16" to 4" deep

**Exceptions:**  
 3096020 cannot be used on dispenser with:  
 a. Full-length door (i.e. Bobrick TrimLine series)  
 b. 12" wide cabinet  
 c. Single towel cabinet (without bottom waste bin)  
 d. Cabinets that are deeper than 4-1/8"

**Use with Tork Elevation Matic Dispensers:**



5510202 White



5510282 Black

1 of 8

|                           |                 |
|---------------------------|-----------------|
| <b>FIRE EXTINGUISHERS</b> | <b>10 44 16</b> |
|---------------------------|-----------------|

Provide fire extinguishers at residential areas a maximum travel distance of 75' from any location, or a minimum of one per floor. Space according to CCR requirements at all locations. Specify fire extinguisher mounting height per CCR/OSA accessibility requirements.

Fire Extinguishers:

1. Badger or Amerex, to match existing campus standards.

Fire Extinguisher Cabinets:

1. J.L. Industries.
2. Larsen Manufacturing Co.
3. Modern Metal Products by Muckle
4. Or equal

Fire extinguisher cabinets (FECs) to be located near the room entrance in a highly visible location.

Fire Extinguishers: Provide extinguishers with following UL ratings; aluminum or steel cylinders, rechargeable type.

1. Type 1: 5#ABC; 3A-40BC stored pressure dry chemical type; 5 lb. capacity, approximate 10 lb. shipping weight.
2. Type 2: 10#ABC; 10A-80BC stored pressure dry chemical type; 10 lb. capacity, approximate 20 lb. shipping weight.
3. Type 3: 10#BC; 60-BC stored pressure dry chemical type; minimum 10 lb. capacity, approximate 20 lb. shipping weight.

