

TYPICAL SIGNAGE AT CORRIDOR DOORS

1 SIGNAGE
 Lettering shall be a light color on a dark background. Braille identification shall be provided as required. Signage at all occupied rooms shall be 7" by 7" square, (with radius corners). Signage at teaching classrooms and labs, mechanical, custodial or storage rooms shall be 4" by 7" (with radius corners).

2 BULLETIN BOARDS
 18" by 24" fire rated bulletin board to be provided for each faculty office, research lab and other assignable rooms. Do not provide bulletin boards at teaching classrooms and labs and service rooms. Verify location of larger bulletin boards with University's Representative.

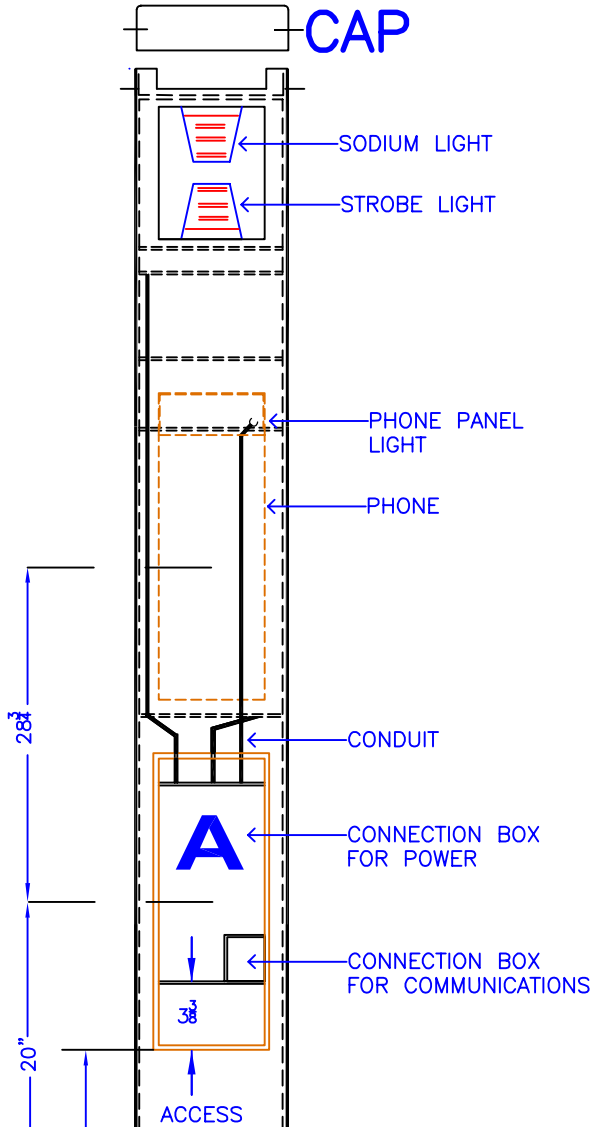
NOTES:

1. ALL SIGNAGE SHALL COMPLY WITH CCR TITLE 24.
2. ALL SIGN SURFACES SHALL HAVE A NON-GLARE FINISH.

UNIVERSITY OF CALIFORNIA SANTA CRUZ Physical Planning and Construction	<small>SHEET TITLE</small> TYPICAL SIGNAGE AT CORRIDOR DOOR	<small>DRAWN</small> OAC	<small>LOCATION</small> 	<small>FILE NO.</small> REF
	<small>BUILDING OR PROJECT</small> CAMPUS STANDARDS	<small>CHECKED</small> SK	<small>SCALE</small> 1/2"=1'-0"	10.4-41 <small>OF</small>
		<small>APPROVED</small> PP&C	<small>DATE</small> 12/17/1997	

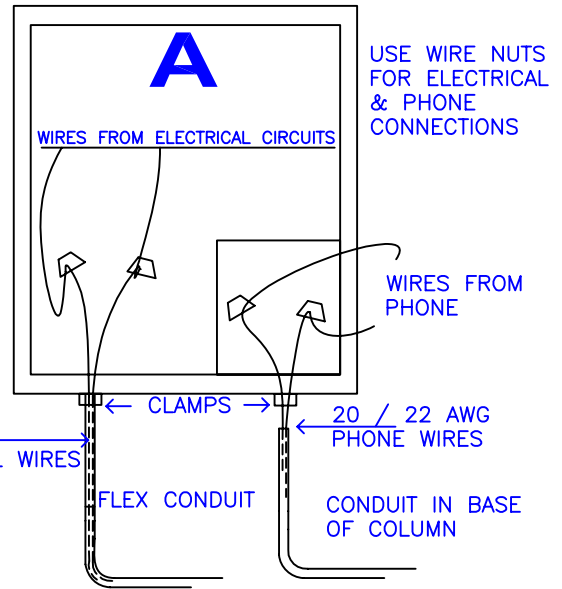
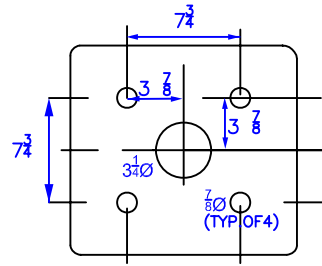
POWER CONSUMPTION
 300 WATTS - 120 VAC
 400 WATTS - WITH HEATER

BACK VIEW CAP



BOLT LAYOUT FOR COLUMN
 (4) 5/8\" 3 BOLTS - 16\" LONG

TEMPLATE PROVIDED



RAMTEL PLC 8 11\" SQ. S.S. COLUMN

PROVIDE ABOUT 18\" LENGTH OF PVC COATED FLEXIBLE CONDUIT FROM ELECTRICAL CONDUIT IN BASE TO CONNECTION BOX IN COLUMN. COLUMN IS PRE-WIRED.

GRADE

ANCHOR BOLTS (4)

20 \" SQ. CONCRETE COLUMN BASE SHALL BE SURROUNDED BY UNDISTURBED SOIL OR BACK FILL COMPACTED TO 95% DENSITY OF SURROUNDING UNDISTURBED SOIL.

UNIVERSITY OF CALIFORNIA
 SANTA CRUZ
 Physical Planning and Construction

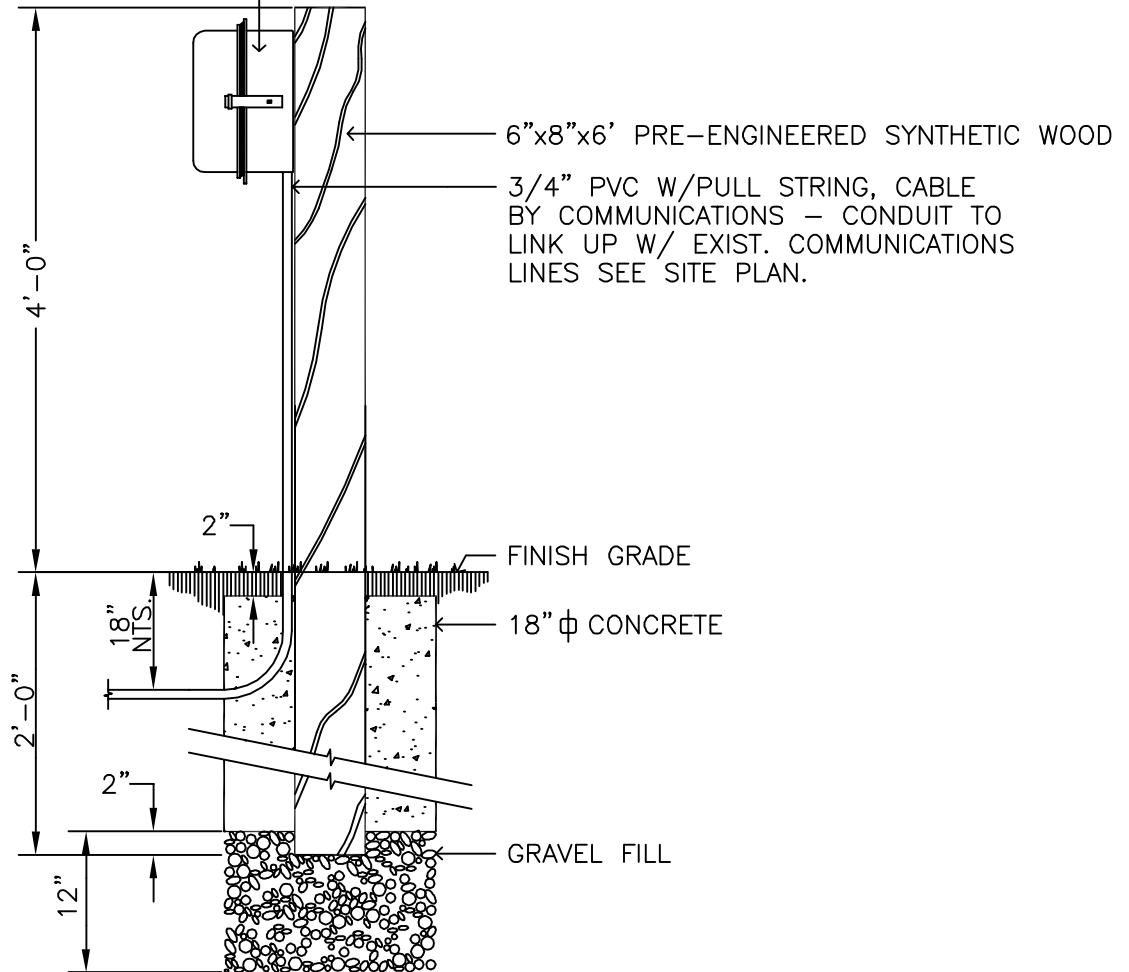
SHEET TITLE
BLUE LIGHT EMERGENCY PHONE
 BUILDING OR PROJECT
CAMPUS STANDARDS

DRAWN
MS
 CHECKED
RT
 APPROVED
PP&C

LOCATION
VARIOUS
 SCALE
N.T.S.
 DATE
11/05/2007

FILE NO.
REF
 SHEET
10.7-50
 OF

TELEPHONE & ENCLOSURE BY
UNIVERSITY'S COMM. DEPT.
CONTRACTOR TO INSTALL



UNIVERSITY OF CALIFORNIA SANTA CRUZ Physical Planning and Construction	SHEET TITLE	DRAWN	LOCATION	FILE NO.
	CAMPUS PHONE	ENG		REF
	BUILDING OR PROJECT	CHECKED	SCALE	SHEET
	CAMPUS STANDARDS	AB	N.T.S.	10.7-51
		APPROVED	DATE	OF
		PP&C	6/1/04	